

**Winnebago County, IL  
GPS PROJECT 2000**

Station Name WIN 00.4N-00.0W A Station No. 73 A

Section 31, Town 43 North, -Range 1 East West

Town of Rockford, County Winnebago, State Illinois

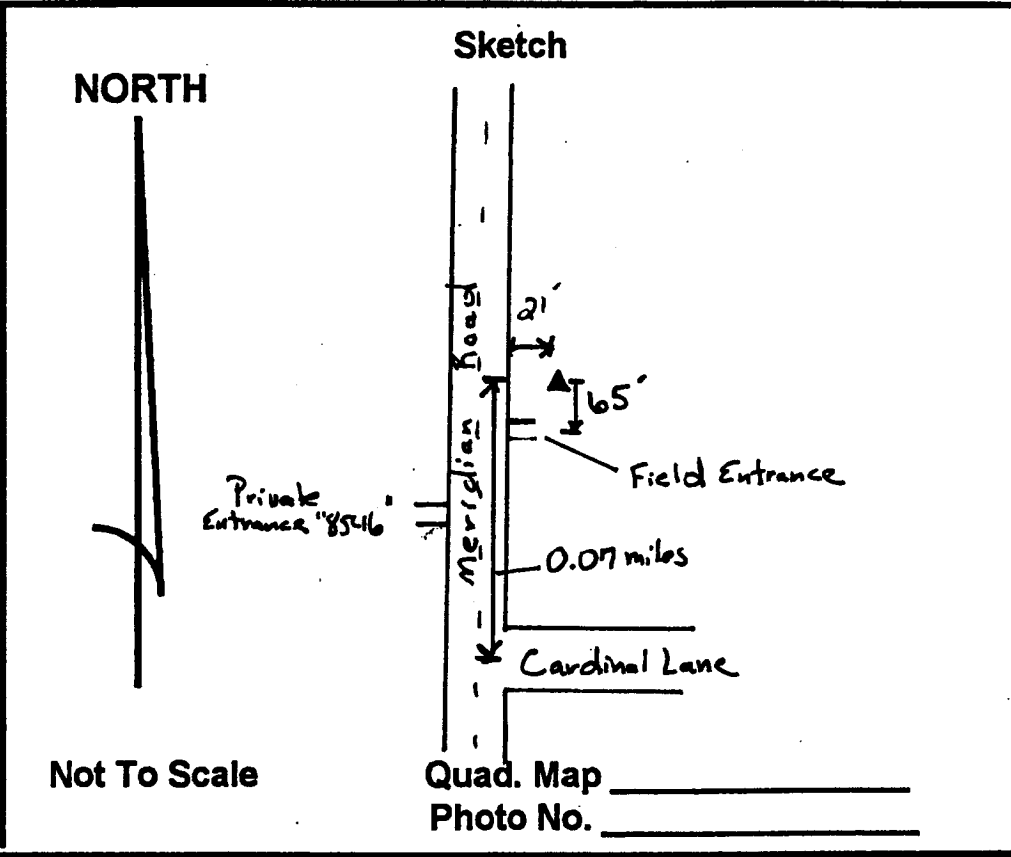
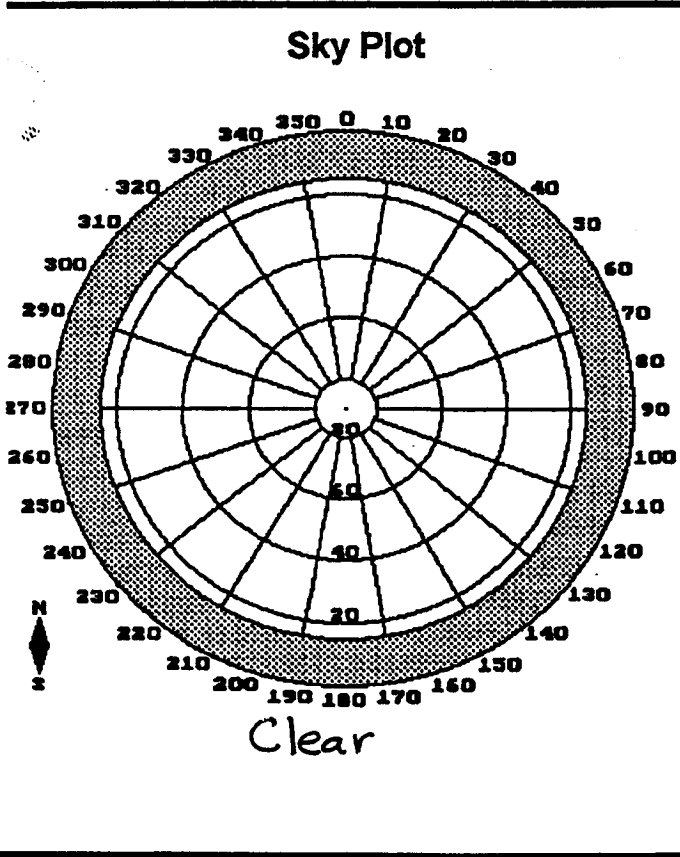
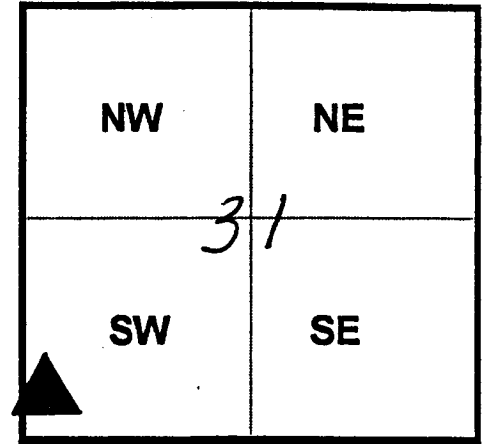
Observer C. Trieloff; Date of observation 31 Oct. 2000

Order of Control 1<sup>ST</sup>  -Meters  - Feet Zone: IL WEST

County Coordinates: N: 608182.102 LAT: 42 08 26.32317 N

H. Datum: NAD 83/91 E: 782173.239 LON: 89 10 21.35644 W

V. Datum: NAVD 88 ELEV: 243.740 ELLIP 210.640 GH '99 -33.10



**DESCRIPTION:** Station is a stainless steel rod in PVC Pipe. Station is 65 feet North of the center of a Field Entrance, 21 feet East of the East EOP of Meridian Road, 85 feet North of the center of Private Entrance "8546" and 1 foot West of an orange carsonite witness post. Note :- Station is 1.4 miles South of Kishwaukee Road.