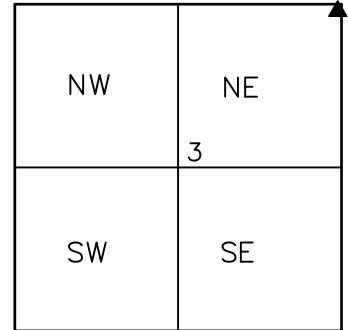




Winnebago County, IL
GPS PROJECT 2007



Station Name WIN 128 RESEST Station No. 128 RESEST

Section 3 , T 44 North, Range 2 East

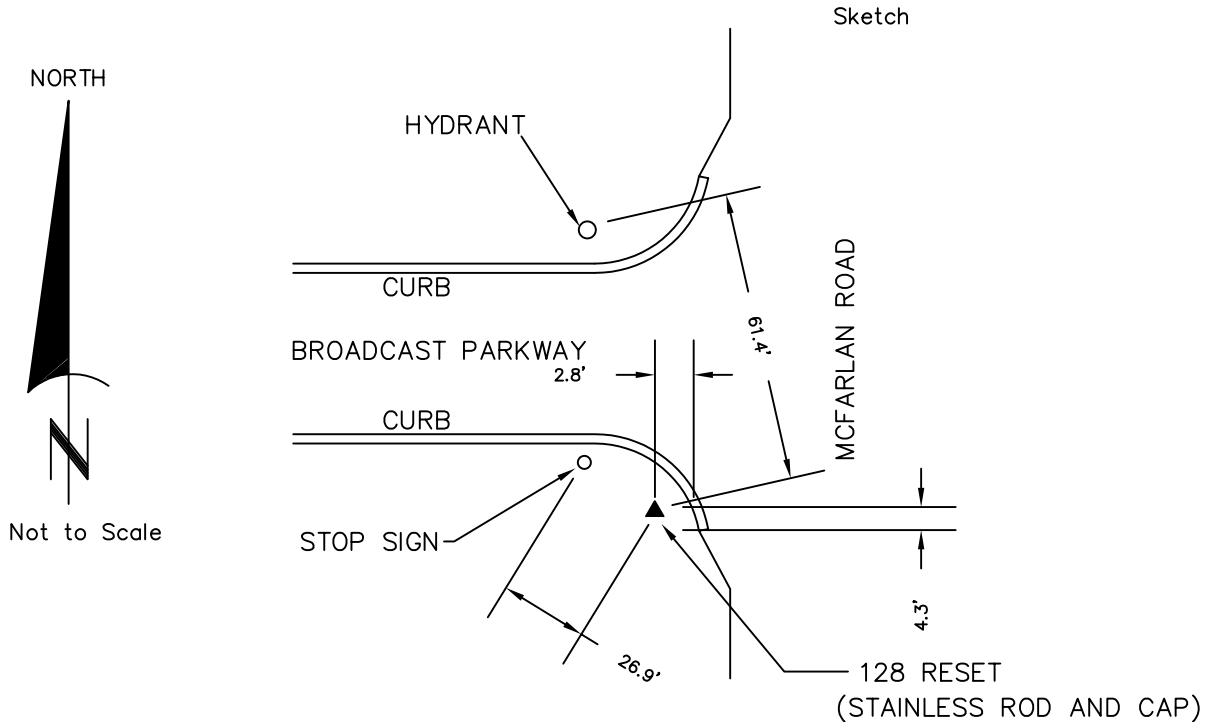
Town Of ROCKFORD , County Winnebago , State Illinois

Order of Control FIRST

ILLINOIS STATE PLANE WEST (METERS): N: 629013.477 LAT: 42 19 34.89090 N

H. Datum: NAD 83(1997) E: 797822.549 LON: 88 58 47.32874 W

V. Datum: NAVD 88 ELEV: 273.19 ELLIP: 239.678



DESCRIPTION:

TO REACH THE STATION FROM THE INTERSECTION OF EAST RIVERSIDE BOULEVARD AND MCFARLAND ROAD, GO NORTH ON MCFARLAND ROAD 0.41 KM (0.3 MI) TO THE STATION ON THE LEFT. THE STATION IS 1.3 M (4.3 FT) NORTH OF THE END OF A CURB AND 0.85 M (2.8 FT) WEST OF THE WEST BACK OF CURB. THE STATION IS 8.2 M (26.9 FT) SOUTHEAST OF A STOP SIGN AT THE SOUTHWEST INTERSECTION OF MCFARLAND AND BROADCAST PARKWAY AND 18.7 M (61.4 FT) SOUTHEAST OF A HYDRANT AT THE NORTHWEST INTERSECTION OF MCFARLAND AND BROADCAST PARKWAY