

Station No. _____

**Winnebago County, IL
GPS PROJECT 2000**

Station Name WIN 10.2N-10.4W A Station No. 125 A

Section 31 Town 27 North-Range 10 East West

Town of Peotonia County Winnebago State Illinois

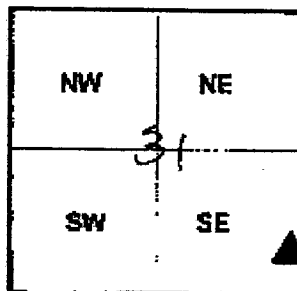
Observer C. Tridloff ; Date of observation No. Nov. 2000

Order of Control 1ST - Meters - Feet Zone: IL WEST

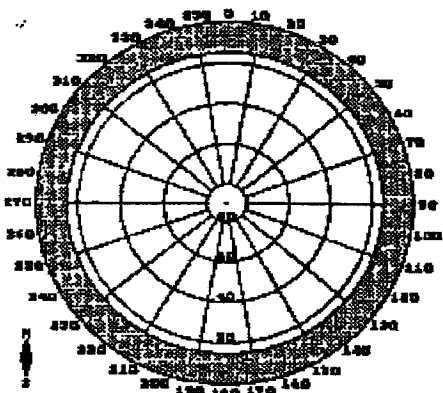
County Coordinates: N: 624815.633 LAT: 42 17 31.19835 N

H. Datum: NAD 83/97 E: 764991.402 LON: 89 22 42.85286 W

V. Datum: NAVD 88 ELEV: 254.120 ELLIP 220.860 GH '99 -33.26



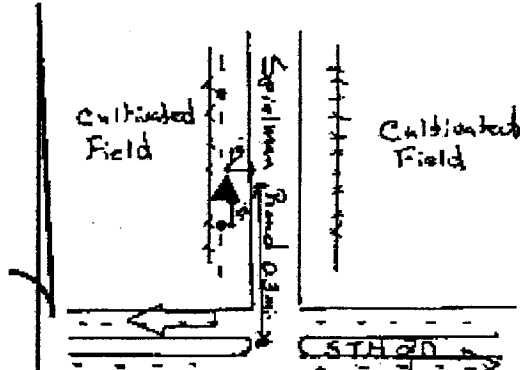
Sky Plot



Clear

Sketch

NORTH



Not To Scale

Quad. Map _____

Photo No. _____

DESCRIPTION: Station is a stainless steel rod in PVC pipe. Station is
0.3 miles North of STH 20, 23 feet West of the West EOP
of Spielman Road, 20 feet North of utility pole
and 1 foot East of an orange concrete utility post.