

**Winnebago County, IL  
GPS PROJECT 2000**

Station Name WIN 22.1N-09.7W A Station No. 115A

Section 32, Town 29 North, -Range 10 East/ West

Town of Laona, County Winnebago, State Illinois

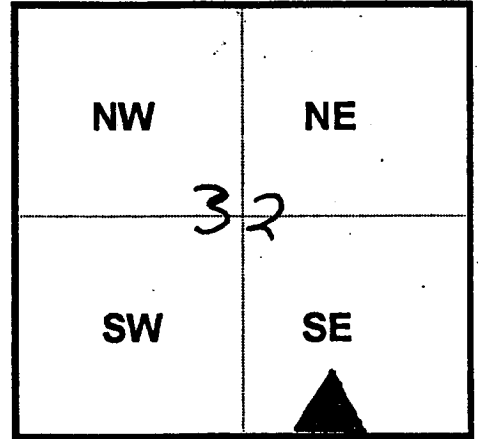
Observer C. Trueloff; Date of observation 21 Nov. 2000

Order of Control 1<sup>ST</sup>  -Meters  - Feet Zone: IL WEST

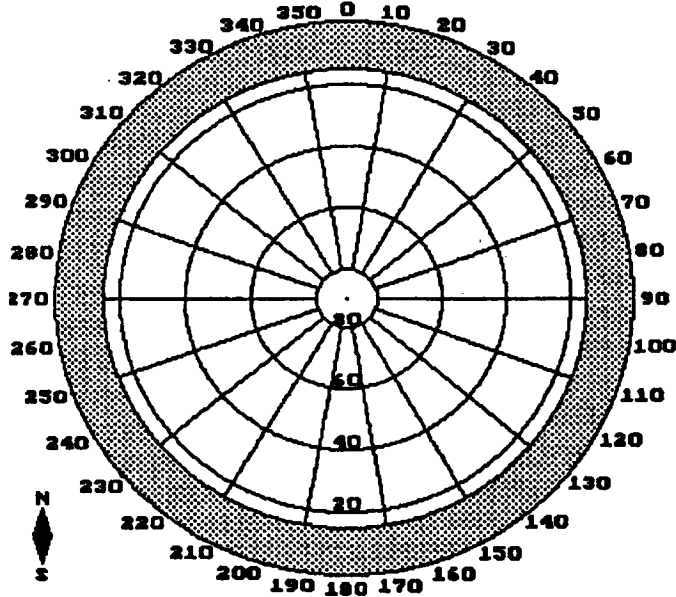
County Coordinates: N: 643705.160 LAT: 42 27 43.25941 N

H. Datum: NAD 83/91 E: 765340.062 LON: 89 22 19.92743 W

V. Datum: NAVD 88 ELEV: 237.650 ELLIP 204.110 GH '99 -33.54

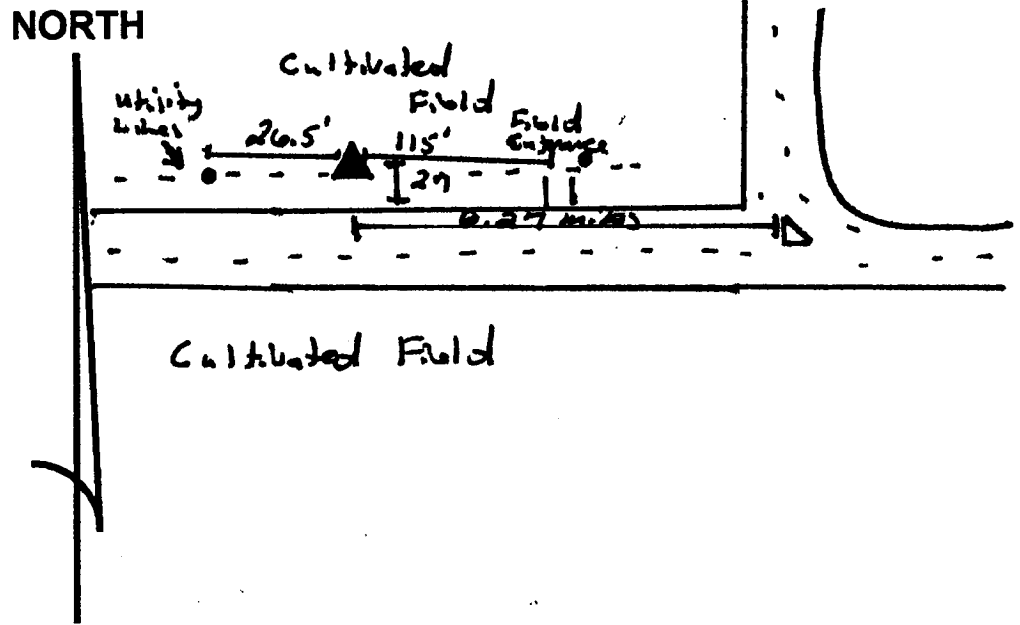


Sky Plot



Clear

Sketch



Not To Scale

Quad. Map \_\_\_\_\_  
Photo No. \_\_\_\_\_

DESCRIPTION: Station is a stainless steel pipe in pvc pipe. Station is 0.27 miles West of Anderson Street, 27 feet North of the North EDP of Park Grove Road, 26.5 feet East of Utility pole "69399483," and 1 foot South of an Orange Corrosion Warning post, and 11.5 feet West of the Center of a Field Entrance.